

Solar Module

KIOTO
SOLAR

Glass-60

260 Wp poly

285 Wp bifacial (efficiency up to 360 Wp)

EXTREME! For the toughest applications

The glass glass module from KIOTO SOLAR ist the premium alternative for onroof or free-standing PV systems. It is extremely solid and resistant - also against extreme environmental influences. Thanks to its special glass compount system it is extremely durable. It can be used for households or large-scale applications!

Advantages:

- // Extremely solid: improved cell protection against dynamic load due to glass on the backside
- // Extremely resistant: also against extreme environmental influences, less pollution
- // Extremely durable: special glass compound system
- // Extreme fire-resistance class because of double glazing
- // Extremely efficient: up to 360 Wp efficiency due to bifacial cell technology

20
years
surplus
guarantee!

360° glass-glass module
with bifacial
cell technology



GLASS-60

KPV GE 260 Wp poly

KPV GE 285 Wp bifacial

Module specifications

Type	Pmpp _[Wp]	Ump _[V]	Imp _[A]	Uoc _[V]	Isc _[A]	efficiency rate	area per kWp
260 poly	260Wp	32,28 V	8,05 A	38,46 V	8,53 A	15,70 %	6,41 m ²
285 bifacial	285 Wp	32,40 V	8,80 A	39,66 V	9,26 A	17,20 %	5,84 m ²

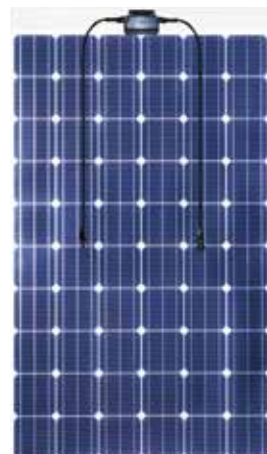
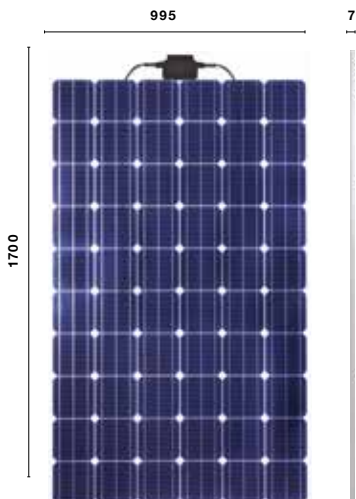
Electrical data

60 crystalline cells	156mm x 156mm		
Connecting System	Tyco-PV4, MC4 - compatible plug in connector 4 mm ²		
Max. system voltage	1000V DC		
Power tolerance	(+ 5 W / - 0 W) Measurement: STC (standard test conditions)		
Temperature coefficients	poly: Pmpp -0,41%/K	Uoc -0,31%/K	Isc +0,057%/K
	mono: Pmpp -0,42%/K	Uoc -0,32%/K	Isc +0,047%/K
Max. reverse over current	15A		
Operation temperature	+85°C up to -40°C		
Cable length	2 x 1000mm		
Bypass diodes	3 pcs.		
Efficiency guarantee	min. 97% in the first year, afterwards max. 0,70 % reduction p.a. up to 25 years		
Product guarantee	20 years with frame / 12 years without frame		



Technical data

Size without frame	1700 mm x 995 mm x 7 mm (+/- 3 mm)
Size with frame	1679 mm x 992 mm x 40 mm (+/- 3 mm)
Weight with/without frame	21 kg / 27,50 kg
Glass specification	Front: 3mm / Back: 3mm
Encapsulation material	STRE
Backside material	Isovoltaic, Dunmore
Test certificate	IEC 61215, Ed. 2 incl. mechanical load test up to 5400 Pa, IEC 61730; IP 65
Packaging	25 modules / pal. (without frame) 23 modules / pal. (with Rahmen)



All dimensions in mm, * tolerance +/- 5 mm



Surplus for glass glass modules

- // 20 years surplus guarantee
- // +30% surplus efficiency thanks to bifacial cell technology

Bifacial cell technology

- // up to 360 Wp overall performance thanks to active module back side
- // Use of PID-resistant module components
- // LID-effect nearly 0%
- // Use of 60 high-efficiency bifacial-cells
- // extremely solid thanks to laminated safety glass

The customer carries the sole responsibility the the goods ordered and delivered are suitable for his purposes. Applicational advices, whether verbal, in writing or by making tests are conducted to the best of KIOTO Photovoltaics GmbH's knowledge, whether verbal, in writing or by way of trials or otherwise, is provided to the best of our knowledge, but without any guarantee or liability. Special technical constructions may be subject to of ficial approval. The constructor or the client is responsible for obtaining such of ficial approval. The customer must bear any costs caused by changes or alterations because of special technical constructions, especially for tests or calculations. A project-related, static pre-dimensioning as well as the correct use of the glasses was not carried out or tested by us.
Measurement tolerance ±3%